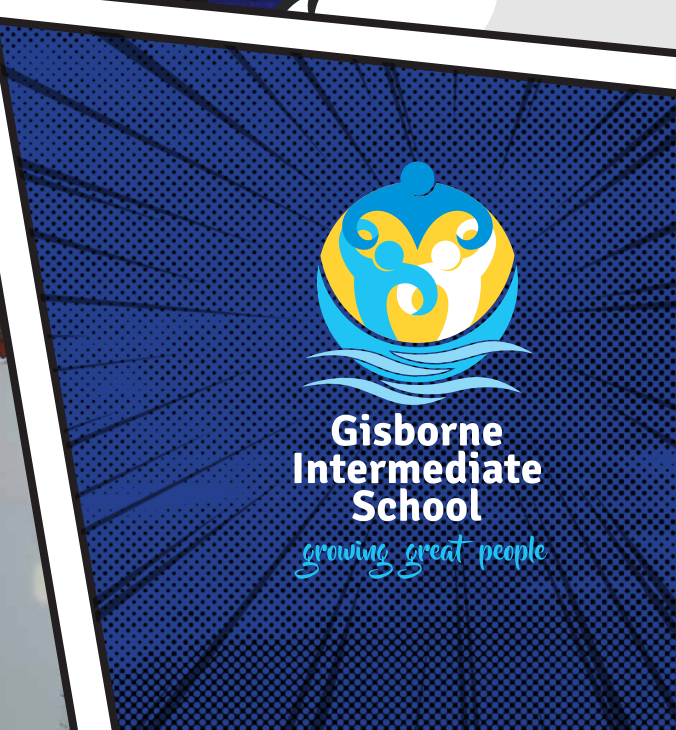




2025 PROSPECTUS





GROWING GREAT PEOPLE





MESSAGE FROM THE PRINCIPAL



Ngā mihi nui ki a koutou - greetings to you all.

As the Principal of Gisborne Intermediate, it is my privilege to introduce you to our school and give you an insight into the many exciting learning opportunities we have to offer.

GisInt has a long history as a high performing school that is focused on meeting the unique characteristics and needs of emerging adolescents. This is a really important time in our students lives and while learning is always at the forefront, we also acknowledge the many changes and challenges the students are going through physically, emotionally and socially. We care for our students and understand there are ups and downs as they navigate these changes while transitioning to a large intermediate. We have strategies and systems to support our students and help them to engage in all the opportunities that GisInt offers.

Our aim as a school is to work collaboratively with whānau to grow great people. We support the students and prepare them for the next stage of their learning to help them become positive, contributing members of society.

Our teaching team works hard to provide quality teaching and learning programmes to ensure that our students learn and achieve to their highest possible level. We have quality learning support staff who help and encourage students who may need a little bit extra. Our programmes are balanced and designed to develop the whole person so that they are able to excel at high school and beyond.

GisInt offers numerous opportunities for students to experience and be extended in academic, cultural, sporting and leadership activities. We encourage our students to take risks, to go out of their comfort zones and be exposed to new experiences.

Our school RISE values are evident in the environment and students are taught and encouraged to live these values in all parts of their lives.

The best way to see if GisInt is the school for your child is to come and have a look around. Our Open Evening is on **Monday 16 September 2024** or, if you'd like a more personalised look around, contact the office and we will organise either a staff member or a student to accompany you.

I look forward to meeting you and working in partnership with you and your tamariki to provide the best possible learning environment and opportunities for your child.

Ngā mihi

Andy Hayward
Principal



CORE VALUES

OUR VISION

Growing Great People | E tipu, kia rea

OUR MISSION STATEMENT

Create personalised learning opportunities for our tamariki with connections to the world around them through powerful partnerships between students, teachers and whānau.

OUR VALUES

MANAAKITANGA KINDNESS
LISTENING SHARING
 SUPPORTIVE OF OTHERS & DIFFERENCES
 USING GREAT MANNERS **CARING**
 APPRECIATION OF SELF, OTHERS & SCHOOL ENVIRONMENT
 CONSIDERATE OF OTHERS
 WHAKAWHANAUNGATANGA **RELATIONSHIPS**

RESPECT



WALK WITH MANA HONESTY
KOTAHITANGA RESPONSIBLE
RELIABLE DOING THE RIGHT THING
CONSISTENT UNITY
WHAKAPONO OWNERSHIP
 SEEK OPPORTUNITIES **TRUST**
EMPATHY FOCUSED

INTEGRITY



SOLVING PROBLEMS COMMITMENT
 FOLLOW INSTRUCTIONS
COOPERATIVE PUNCTUAL
 LOOKING AFTER PEOPLE, BELONGINGS & PROPERTY
ORGANISED FOCUSED
CONSISTENT INITIATIVE
EMBRACE LEARNING

SELF MANAGEMENT



AIM HIGH TEAMWORK
PERSONAL BEST
 CELEBRATE SUCCESS PERSEVERANCE
GOALS ACHIEVED
WHAI TE ITI KAHURANGI
CAN DO ATTITUDE

EXCELLENCE



WHAT STUDENTS' SAY

Matthew Callaghan, Matthew Langford, & Mitchell Spriggs

“RISE values are what students at GisInt strive towards.

As students, we see RISE values as:

- giving things a go and trying your best to succeed
- being friendly, honest, polite and caring
- never giving up
- organised for your day and planning for what comes ahead

All of these qualities are what makes a GisInt student special!”



OUR CURRICULUM

LITERACY

Our students are immersed in language rich environments where there is a strong focus on developing a deep understanding of literacy which is integrated across all learning areas. Literacy programmes teach students the skills, knowledge and attitudes to enable them to be effective writers, readers and communicators.

For extension we provide:

Interschool debating, public speaking, Australasian English and Writing exams, writer's workshops, writing competitions, spelling exams, reading and writing groups.

MATHEMATICS

Our experienced staff have high expectations of students' success in numeracy and focus on learning programmes that address students' specific needs. Our students develop the ability to think creatively, critically, strategically and logically by being provided with a learning programme that is delivered through rich, balanced and real-life contexts.



For extension we provide:

An inter-school challenge with Whakatāne Intermediate, Otago Problem Solving, Australasian Mathematics exam and withdrawal groups.

HEALTH & PHYSICAL EDUCATION

Programmes to develop student well-being through learning in health related and movement contexts.



Our teachers pride themselves in delivering learning programmes in health education that enables students to make informed decisions and act in ways that contribute to their personal well-being, the well-being of others and of society as a whole. Themes taught through health programmes include our school RISE values, personal well-being, healthy communities and environments, relationships with others and digital citizenship. Gisborne Intermediate develops skilled games players who grow thinking, physical and social skills.

For extension we provide:

PE programmes and sports exchanges.



WHAT STUDENTS' SAY

Millie Snodgrass & Molly Muir

“At GisInt learning can look very different for different lessons and activities. We learn individually, in groups, and as a class. Teachers make learning fun by using presentations, plays, and out of the classroom learning. The teachers at GisInt are very motivating, fun, and hook you in no matter what the subject is.”



INQUIRY LEARNING

The integration of Science, Social Studies, Technology and Health.

Our Inquiry Learning model ensures students develop their ability to ask the right questions, gather, record and present information. Topics of student interest are used which challenge their thinking and provide students with the opportunity to address their own questions and to focus on real life issues that are relevant to them.

For extension we provide:

Australasian Science exam, EPro8 Challenge and withdrawal groups for extension and enrichment.



GROWING GREAT
PEOPLE THROUGH



CELEBRATING SUCCESS

AND DELIVERING EXCELLENCE

AN INTEGRAL PART OF OUR SCHOOL PHILOSOPHY

As a school we recognise a broad spectrum of student achievement from the smaller successes in every day improvements to major awards. Successes are recognised in a variety of ways including: classroom awards, syndicate awards, values certificates, assembly presentations, Students of the Week, acknowledgement in our weekly newsletters, school Facebook coverage, newspaper photos and articles. The recognition of your child's success enables them to develop a keen sense of their self worth and to apply themselves with a greater enthusiasm and determination to develop their skills and talents.

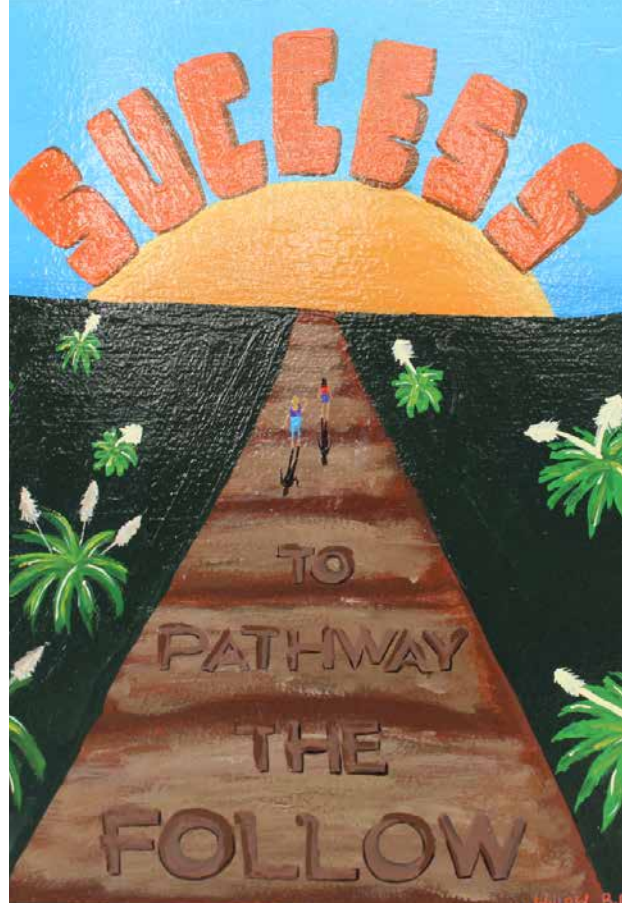
WHAT STUDENTS' SAY

Tiggy Sheldrake & Josh Newlands

“GisInt has many ways to recognise our students achievement. Excellence in academic, cultural, sports, and contribution to the school, are recognised and celebrated through weekly and badge assemblies.

Teachers award class certificates to reinforce our RISE values and support us to grow.

We also have a Student of the Week award which is a massive achievement to receive.”



DELIVERING EXCELLENCE

Gisborne Intermediate provides a focus on academic excellence and encouragement to challenge themselves through a wide range of opportunities.

We support learners to aim for excellence by:

- Ensuring access to vibrant and passionate teachers.
- Providing highly successful learning environments specifically developed to meet the needs of 'emerging adolescents'.
- Creating detailed programmes to enhance literacy and numeracy learning.
- Implementing a curriculum that is challenging and integrated.
- Matching students with the right teachers.
- Having opportunities to play sport, learn a musical instrument and join extension programmes regardless of which class they are in.
- Giving students access to extension and enrichment learning.
- Expanding their horizons through our Outdoor Education programmes.
- Coordinating an academic and sporting exchange with Whakatane Intermediate.
- Delivering an inclusive, safe and caring environment.
- Guiding them through a clear set of values and providing clear boundaries.
- Offering access to comprehensive guidance and support services.
- Encouraging learners to achieve to their full potential in and out of class by ensuring they are well prepared for high school.



GROWING GREAT TEACHERS

HOW WE CONTINUE TO DEVELOP A HIGH PERFORMING STAFF

Professional learning opportunities

We invest in staff by giving them access to experts in education. New Zealand has an abundance of professionals who have a proven track record in making a difference in education. We support staff to tap into that knowledge and encourage them to adopt approaches which make an impact and improve the educational outcomes for all learners. Looking outside our local school community not only offers the opportunity to be exposed to new ideas but often provides reassurance that we can match best practice from within our profession right here at Gisborne Intermediate.

Professional learning conversations

Our staff have scheduled meetings with the Leadership Team and colleagues to engage in dialogue around their practice and explore progress being made against personal learning goals. Learning is not just the domain of students as we expect our staff to be on a continual journey of self-improvement themselves. Whilst these learning conversations create accountability around student data and wellbeing, it also energises staff to seek improvement and be better than they were yesterday. Teaching is a dynamic industry which is challenged with constant change. Rather than accepting the status quo, our staff are looking for ways to evolve in order to give learners the best possible deal.

WHAT STUDENTS' SAY

Ngalu Swann-Koloi

As a student I couldn't wish for better kaiako. They teach us the skills we need for the future while always encouraging us to soar for excellence. They help us reach for our goals by being patient, caring, and supportive. Not only do they support us they also provide us with the tools and resources to achieve our goals. They acknowledge our strengths and help us with our weaknesses with fun learning opportunities both outside and inside the akomanga.

Our kaiako treat us all individually and are excellent in bringing out the best in us. They figure out what we can do and nurture these talents with their awesome skills and expertise.

"Whangaia ka tupu ka puawai."

"That which is nurtured blossoms and grows."

Nalani Tuhoe

Our teachers provide us with awesome learning opportunities every day. Any student could tell you what they have learnt and how useful their new learnings are to them. Gisborne Intermediate has extremely talented teachers who care about their students and push them to reach their best. Our teachers are exceptionally hard workers who are supportive, encouraging, and knowledgeable. Our teachers are not just teachers, they hold a key importance in our lives that students will remember once they have moved onto high school and eventually into adulthood.

The effort that is put into making sure we are learning is not missed. Teachers are often talked about as the unsung heroes of our community and no truer words have been spoken, especially with regards to our teachers here at GisInt.

DIGITALLY ENHANCED CLASSROOMS

Our focus is on utilising digital equipment at times to enhance the learning of literacy, numeracy and inquiry learning. There is a balance of computer to book work with students using digital activities to support their learning. Accessing an ever increasing range of digital resources and online learning programmes enhances the learning experience and outcomes. Every day offers a balance of digital interaction with interpersonal, hands on and aspects of traditional learning.

DIGITAL ACCESS FOR ALL CLASSROOMS

Gisborne Intermediate is a place of learning which strongly encourages learners to bring their own device (BYOD). Our school has successfully integrated Chromebooks as a device to support learning and we believe this is a smart investment. A machine with at least 4GB of memory is recommended.

We do not allow cell phones in classrooms. Please talk to one of our staff members if you require further information. All access to the Internet is monitored at Gisborne Intermediate. We have robust processes to ensure learners are only using digital technologies to enhance learning.



Today's students – the generation of digital learners – expect to be connected anywhere, anytime. For many years our Board of Trustees has invested a significant amount of money to ensure that all learning environments are digitally supported.

WHAT STUDENTS' SAY

Charli Willoughby

“At Gisborne Intermediate all of our classrooms are digitally enhanced. We use devices everyday for subjects like: Maths, Literacy, and even Inquiry. Don't worry if you don't have a device – Gisborne Intermediate supplies chromebooks for students in each classroom who don't have their own.

I have loved using digital devices in the classroom, this has improved my learning and hopefully it will improve yours too.”



A HOLISTIC APPROACH TO EDUCATION



SPECIALISATION PROGRAMMES

Over the years our specialist programmes have included Art, Music, Dance & Drama, Science, Food Tech, Horticulture, Sports Education and Industri-Tech. All students will work in specialist areas during the year, with additional opportunities for extension and enrichment for those with special talents or interests.

Dance & Drama

Hip Hop and Drama clubs are available to all students. Our school competes in dance at the highest levels. Special opportunities in events such as Stage Challenge also exist.

Technology

Working with food and hard materials with specialists in these areas.

Languages

We recognise the importance of Te Tiriti o Waitangi and the bicultural foundations of Aotearoa. Students have the opportunity to acquire skills to communicate in Te Reo Māori and learn Tikanga.



Kapa Haka

Competitive/Non competitive.



Sports Education

Learning about the importance of social, mental and physical wellbeing in attending to hauora.

Art

A well resourced Art Room and experienced teacher, enabling all children to realise their artistic talents.



Music

Creating and performing music in classes. Group tuition is also available for various instruments including flute, guitar, bass guitar, violin and keyboard. Currently over 100 students are being tutored within the programme which is subsidised by the Board of Trustees.

STEAM

An integration of Science, Technology, Engineering, Arts, and Mathematics to inspire collaboration, creativity and problem-solving. Students design and develop physical and digital outcomes, linking their learning to real-world contexts.

Horticulture

Hands on experience in growing food and exploring ways to engage in healthy eating.

DEVELOPING THE WHOLE STUDENT

Our holistic approach to education is evident throughout the school. We believe your child is born with inherent talents in music, art, speaking, writing and performing. All the arts flourish within our classrooms and our specialist teachers deliver extension programmes in Dance and Drama, Art, Music, Languages, Technology, Cooking and STEAM.



GATERING FOR ACCELERATED LEARNERS

All of our students have a range of opportunities to develop their known talents and to uncover new ones.

Extension Withdrawal Programmes

Writers Workshop, Reading Extension, Debating, Mathematics, STEAM, Technology and our own arts extension programmes in Music, Art, Dance and Drama.



Music

Talented students are able to participate in our rock bands, performing at Rockshop Bandquest and Showquest for our school. We also have groups for ukulele and drumline. Students can also create music tracks; developing mixing and mastering, recording and song writing.

Sport

Our elite sports people are able to compete at the highest level across a wide range of sports including national sporting events (AIMS Games). They regularly compete against other intermediates from throughout the Bay of Plenty.



Leadership Opportunities

Students who have been identified as having talents in interpersonal and leadership skills are given the opportunity to further develop and put these talents into action. This will benefit themselves, their peers, classrooms, school, families and communities.



We have an established reputation in the education community for offering rich and challenging experiences to help realise the potential of all the young people who attend our school.

If they discover a talent for any particular aspect of the school's curriculum they are invited to join an extension group.



TESTIMONIALS

AUSTIN YOUNG

When I first started at GisInt, I was quite nervous. I thought that it would be a massive school and a huge step, but now, three terms into the year I have been having a great time! I don't know why I ever worried so much in the beginning.

There are many opportunities that I have trialed for here at GisInt.

The badge system has motivated me to try different cultural, sporting, and academic opportunities such as trialing for Stage Arts, Rugby, Tennis, and Squash. It's been really fun. There are four values at GisInt: Respect, Integrity, Self Management, and Excellence which are known as the RISE values. We show our RISE values on the sports field, in the classroom and on school trips. I was lucky enough to have been chosen to represent GisInt at Winter Tournament for the open weight rugby team. We were billeted with a family which was really fun. Tech is also a big part of GisInt, my favourites are Cooking and Sports Ed.

GisInt is a great place to be, I hope you come and join us next year.



SEQUENCE POI-WILLIAMS

On my first day when I stepped into GisInt school I was nervous, I was going from a small school to a huge school. Luckily, my teacher helped me settle in quickly. We played a game to interact with each other and get to know each other better. Now I've been here a while, I have to admit, GisInt is a great school to go to. There are so many new opportunities you can do. We have Tech which is when you learn other subjects like Art, Sports Ed, Woodwork, Cooking, STEAM, Music and Horticulture!

I've really enjoyed my year and making new friends. I hope to see you here in 2025 too.



ANGUS CARPENTER

When I first came to GisInt I was super nervous. Once I met my teacher, I knew it was going to be a good year. Miss Wilcox has helped me to be a better person and a better learner too, I enjoy being in her class. GisInt is a good school because there is a lot to do here.

We have Tech and the opportunity to try a whole lot of different sports. Every teacher here is so nice and will help you out. The best thing I've found at GisInt is a lot of people want to be your friend. It is great meeting new people. If you like biking or scootering, GisInt has a pump track which is open at breaks. The Whakatane Exchange is another opportunity where you can play sports and compete in academic challenges. I hope I see you at GisInt in 2025!



TIAKI KINGI

Oh my gosh it's nearly the end of 2024, this year has gone really fast! I remember when I first started at GisInt, I was a bit confused and nervous. I didn't know much about the school but I soon started to see all the opportunities that GisInt has to offer. I started music tuition and am in the choir that will be performing in our Show Quest. It took a little while, but by the middle of term two I started to get into a rhythm. I am focused and my learning has improved so much. It is truly the best school in Gizzy. My favourite activity has to be kapa haka. I lead some songs and feel like I do it really well. My friends and the teachers supported me which lifted my confidence. Our school also has a Tech programme. The Techs are Art, Sports Ed, Horticulture, Cooking, Music, and Woodwork. Our teachers are great, if you get nervous or scared they will make you feel right at home. Can't wait to see you in 2025 next year.



CLASSROOM LEARNING OPTIONS



At Gisborne Intermediate our learning hubs are either a single-teacher learning environment or a collaborative learning environment. Teaching pedagogy and technology used to support learning is the same irrespective of the physical environment the teachers and students are in.

SINGLE CELL LEARNING HUBS

Learning hubs with one teacher is a preferred option for some parents and students. Our teachers are skilled at meeting the academic and social needs of a diverse range of learners through a combination of whole class, group and individual teaching. For some learners this approach works. Many parents feel secure in this method of delivering educational outcomes knowing that just one teacher will be responsible for meeting their child's needs on a daily basis.

COLLABORATIVE LEARNING ENVIRONMENTS

At Gisborne Intermediate we have created a number of collaborative learning environments in order to deliver a responsive and future focused education. These learning spaces allow students to have flexibility with their learning and to be supported by teachers with their expertise in collaborative teaching strategies. Many learners discover the benefits of having access to more than one teacher in their learning environment.

TE AO MĀORI LEARNING ENVIRONMENT

E tipu e rea mō ngā rā o tō ao. Ko tō ringa ki ngā rākau a te Pākehā Hei ora mō te tinana. Ko tō ngākau ki ngā taonga a ō tīpuna Māori.

Ngā Manu a Rēhua is an education team within our kura which is about whānau - through our identity as individuals and as a collective, our tamariki are nurtured into being the very best that they can be. Where each of their talents and strengths is utilised to capture the very best for their learning. A characteristic of this learning programme is that learning is not confined within four walls, the classroom moves to get the most enriching learning experiences possible. Te Ao Māori is proudly woven through all that is done.



At Gisborne Intermediate we recognise the importance of finding the right learning environment for every learner.

WHAT STUDENTS' SAY

Hazel Cheetham

“Single cell classrooms are great for those who like a slightly less busy space with only one teacher in a classroom of around 25-30 students. These classrooms are more like what is on offer at most primary schools and is a great option for those who prefer smaller learning spaces. I have been in a single cell class throughout my two years at GisInt and I have thoroughly enjoyed this option.”

Mitchell Spriggs

“Collaborative classrooms are good for students who like to learn alongside lots of people. I have been in a collaborative classroom for a year, and I have enjoyed making new friends and having more than one teacher to learn from. In a collaborative classroom you have more space to choose where to sit and get in the right headspace for your learning. If being around lots of learners is your jam, then you should probably be in a collaborative classroom.”



TESTIMONIALS

OLIVIA DODD

Before my first day at GisInt, I was really nervous that I wasn't going to like it and I would want to go back to my primary school. It didn't take long to realise that I actually love it and don't ever want to leave! It has had such a big impact on my learning, because the way that the teacher's teach and we learn is so different here. Teachers are friendly and helpful and explain things really well. I have learned a lot and enjoy using programmes like Write That Essay and Mathletics to support my learning. There are so many opportunities and things to try, for example Netball, Ki o Rahi, and Surfing. I really enjoyed our camp at Mahia because we did a lot of sports and activities, got to jump off the rocks, and swim in the river. I enjoy going to our Tech classes; my favourite one is Cooking because you get to make both savoury and sweet food...and it tastes so good! Next year, I look forward to working towards my Honours badge by trying out a range of different things. I love it at GisInt!



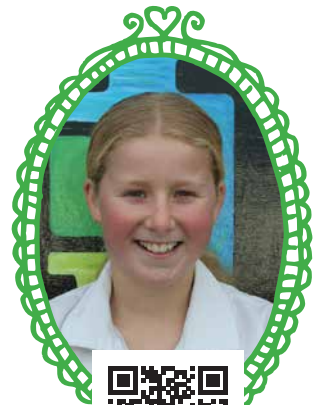
MOANA FUKUSHIMA-HALL

On my first day at Gisborne Intermediate I was nervous. I was leaving friends at my old school and other friends were going to a different school. Everyone would tell me that I would make new friends but I didn't believe them... that was until my first day at Gisborne Intermediate. I received a really warm welcome from staff and the Year 8's which made me feel a lot less nervous. GisInt encouraged me to try new things and to give it my all. At GisInt there are so many opportunities to strive for with our badges which are Sports, Academic, Contribution and Cultural. I honestly can't believe it is already halfway through Term 3! I guess time flies when you're having fun. At GisInt you have something called Tech and personally I have learnt a lot doing Tech. There are seven techs including Cooking, Horticulture, Art, STEAM, Music, Woodwork and Sports Ed. GisInt has truly helped me to be the best version of myself and who I am today. I cannot wait to continue my amazing journey at Gisborne Intermediate. Hope to see you next year!



SOPHIE PHELPS

WOW, I can't believe we are nearly at the end of 2024! Gisborne Intermediate is a fun and exciting opportunity for sports, academics, learning how to contribute in different ways, and knowing about our culture. I have represented GisInt in lots of different ways, such as Winter Tournament, many Super 11 sports, and more. One thing I was nervous about was making new friends, but at GisInt there are so many opportunities to meet new people and make friends. Tech is an important part of learning at GisInt. We have seven different subjects, such as Woodwork, Horticulture, STEAM, Art, Sports Ed, Music, and my favourite one, Cooking. You do tech with your whole syndicate, where you can get to know more about others around you. At GisInt there are a few strong values we all try to follow. These are our RISE values; R standing for respect, I standing for integrity, S standing for self management, E standing for excellence. Gisborne Intermediate also has a lot of learning tools to help with different subjects; Writers Toolbox, Mathletics and Steps Web for reading. GisInt is a big step up from primary school, but I know you will love it just as much as I do. I am looking forward to seeing you guys next year in 2025!



EDUCATION BEYOND THE REGULAR CLASSROOM



At Gisborne Intermediate we ensure all students are offered a varied range of physical opportunities and challenges.

CAMPING

All students take part in a camping experience at the beginning of the year with a focus on water safety.

SPORTING OPPORTUNITIES

We have close and easy access to Gisborne's best sporting facilities and these are regularly used during lunchtime, physical education lessons and sports times, before and after school.

Staff are directly involved in the coaching of cricket, netball, rugby, ki-o-rahi, hockey, soccer, gymnastics, road cycling, mountain biking, swimming, touch rugby, badminton, squash, surfing, basketball, golf, kayaking, waka ama and ultimate frisbee. In all, over 30 sports are on offer.

In addition, all students also have access to lunchtime sports, cross country, swimming, triathlon, athletics and interclass competitions.

Our top sports students, teams and individuals compete in sports exchanges with Whakatāne and compete in the Bay of Plenty/Poverty Bay Intermediate Schools Championships sporting fixtures across at least 18 sporting codes.



WHAT STUDENTS' SAY

Nalani Tuhoē

“Camps are an awesome opportunity here at Gisborne Intermediate. Everyone participates in cool outdoor activities, and everyone learns new interesting things while on their trips. Camps can grow stronger bonds with classmates and teachers and are overall fun and refreshing. Gisint camps could never be duplicated, they are one of a kind, from fun days at the beach to cozy nights in your tents. These phenomenal opportunities will definitely be a highlight of your years at Gisborne Intermediate.”

Cleo Brenchley

“Sports plays a huge role at Gisborne Intermediate. Over 25 different sports teams go out of town throughout the year. Also, there are multiple tournaments like Whakatane Exchange and Winter Tournament which contain many sports like rugby, football, netball, hockey, basketball, etc. They are an exciting opportunity to test ourselves against others our age while building friendships.”

Aubrey Rewi-Wetini

“We get out and explore our district in lots of different ways. We go to the museum, local parks, and learn about local history on the heritage trails. It is a fun and exciting opportunity for students to spend the day out of school and make new friends from other classes.”



TESTIMONIALS

RAIN MAPU

So many emotions came to my head when I took my first step into Gisborne Intermediate. Now we are nearing the end of 2024 I can't believe the year has gone by so fast. At the start of the year there were so many kind people that helped me and showed me around the school which made me feel really welcome. Some of my highlights have been football and volleyball but also the many opportunities that are available. I am really looking forward to being a Year 8 and a leader in the school and taking advantage of what's on offer, in particular the extensions.

I can't wait to welcome you as a Year 7 and I know you will have a great first year, just like me!



MILLY EDWARDS

I can't believe 2024 has nearly come to an end! When I first started at GisInt I was super nervous about the teacher I was going to get, or if I was going to have any friends in my class. But I could not have asked for a better class than LH8. As soon as I stepped into GisInt I was flooded with lots of opportunities. I was spoiled for choice of which trials to go to. This year I got chosen to represent GisInt in many sporting events, such as Super 11 Cross Country, Super 11 Touch, Stage Arts and AIMS Hip Hop. Even though GisInt is a big school, there is a great feeling and I love the fact that I can catch up with friends who were at different primary schools. Whether you're interested in Sports, Academics, Cultural, or Leadership, there is something here for you! All the teachers at GisInt have been really helpful and supportive. The badge system has encouraged me to do different things that I've never tried to do before. So far GisInt has been a really great experience for me, I can't wait to see what's going to happen next year!



OLLIE O'CONNELL

This has been a great year for me and my learning and I've pushed my learning limits. I have been waiting for ages to go to GisInt. I had heard lots of good things about this school, and in my opinion, it is the best school in Gizzy. Before starting I was really nervous because I had no clue who my teacher would be, or who would be in my class. When I entered the class, I realised that there was nothing to worry about. The Year 8's really helped me settle in, find my way around the school, and feel comfortable. As we move forward through the year I am starting to see all the opportunities GisInt has to offer; tonnes of sports teams, music lessons, leadership opportunities, and so much more. My sport has just gone to another level this year and I've tried a few new sports, like Futsal. If you play rugby like me, you'll find that there are many types of rugby to play, like lightweight rugby, rugby league and touch. Another cool feature about our school is our badge system which encourages us to try new things to earn a badge. I know it has definitely motivated me. Tech is also a big part of GisInt, you do it on a weekly basis. We move through different rotations and do Cooking, Sports Ed, Art and a few more. I'm sure you will have an amazing time here at GisInt.



JAHZEL ATKINS

Well the end of Year 7 is near. Who would have thought that when I came to GisInt I was scared, nervous and anxious because it was a big change for me going from a small school, to a really big school. I was worried that I wouldn't find any friends and about who my teacher would be. I was so wrong! I found a great group of friends and my teacher is amazing. She teaches me everything I need to learn AND even things I didn't think I needed to know. That may seem a little boring, but I swear the teachers make all the difference so that you want to learn more. GisInt has helped me get better as a learner and importantly kept it interesting and fun.

GisInt has so many opportunities that you don't want to miss out on because they're amazing. Who doesn't want to join in Tech which has Music, Industri Tech, Sports Ed, Art, STEAM and Horticulture. If you like sport, this is the place for you. There are so many sports groups that have training and competitions so that you'll have plenty to keep you busy,

To conclude, if I was to give some advice to my Year 6 self it would be to surround yourself with a good bunch of friends, get involved, and sign up early to activities and sports so that you don't miss out.



WHAKATANE EXCHANGE








The annual exchange with Whakatane Intermediate School is an eagerly anticipated event which has been happening for 30 years. The exchange has students from both schools competing in sporting and academic challenges to decide who takes home the trophy and the bragging rights.

The hosting school changes each year, meaning a student can represent our school at home, and away. This involves a large number of students. Our school has 150+ competitors in the exchange and a lot more are involved when we host.

Billeting is a special part of this exchange. Most students are a bit nervous about their first time being billeted, however, by the next day they are best mates with their billet and full of exciting stories. Many students stay in touch with their billet and try to host them when they come to Gisborne.

This event is unique as it encompasses competition in sport and in the classroom. It also allows the teachers from both schools to build a connection and learn from the knowledge and experiences of each other.

- BASKETBALL  BOWLS
- DEBATING   BADMINTON
- NUMERACY & LITERACY  RUGBY  NETBALL
- FOOTBALL  HOCKEY 



TESTIMONIALS

TAWHAI BROUGHTON

When I first arrived at GisInt, I didn't know anything about it, except that most of my friends were going there. I didn't realise that I would be in a class filled with amazing people and lots of opportunities for new friends. The thing that really surprised me, was that there were over 15 hubs in GisInt, it is huge! I knew that making friends was definitely an opportunity at GisInt, even if they were in a class on the other side of the school. When you realise that GisInt is just like primary but a bit bigger, you'll feel like it's home quicker than a flash. There are many sports for many different people like rugby, netball, basketball, soccer and many clubs like debating, choir and bass. The RISE values are important. R meaning respect, I meaning Integrity, S meaning Self management and E meaning Excellence. There are many opportunities for extensions like Horticulture, Kapa Haka, STEAM, and my personal favourite, Cooking. I was really surprised that GisInt has a weekly award, called Student of the Week like my primary school. Each class gets allocated a certain amount per year, so it is quite hard to get one. I was so surprised that I got the SOW award in just two terms! On top of this there are still weekly class certificates too. I hope every person coming next year has an awesome adventure like me.



NGALU SWANN-KOLOI

Term three already, WOW that was quick! Since joining GisInt, my learning journey throughout the year has been AMAZING. At first I was really nervous and worried that I was not going to fit in but I couldn't have been more wrong. I was made to feel so welcome by my new classmates and I've really enjoyed being in my new class Ngā Manu a Rēhua.

Our class provides lots of valuable learning opportunities. If you want to speak, learn and be confident in Te Ao Maori and where you come from, then our class is the perfect place for you. I've learnt so many special things about myself while being in this class like my pepeha, how to speak Te Reo Māori, learning through our karakia, moteatea, waiata, haka and purakau. My inquiry projects are based on taonga like my marae - Whakato, Matariki and my tipuna. These projects have enabled me to connect with special people and places and help me walk confidently in the world. One of my favourite things to do is learn outside of the classroom and be free to experience the taiao. Access to our trips is always dependent on meeting our learning targets - everything has a purpose and because none of us want to miss out we make sure that everything is up to date. Being in a class that is a whānau means that we support each other in our learning and a favourite saying in our class is 'do the mahi, enjoy the treats'.

Outside of our class I enjoy the huge range of sports and opportunities that we have access to. I can't wait to see what Ngā Manu a Rēhua and GisInt has left instore for me.



GENERAL INFORMATION

OPEN NIGHT



Monday 16 September 2024

5.30pm to 6.30pm

This is an opportunity to experience the school environment, see aspects of the school programme in action and talk to the Board, staff and students.

ENROLMENT SCHEME

Enrolment at Gisborne Intermediate in 2024 is governed by an enrolment scheme. Details of the scheme can be found on our school website www.gisint.school.nz

The Board has determined that there will be 40 spaces available for out of zone applications.

Out-of-Zone Enrolments:

Enrolments close: Monday, 21 October 2024

Enrolments confirmed: Friday, 1 November 2024

SCHOOL TERMS

One Start Y8 returning: Thursday, 30 January 2025

Start Y8 new & Y7: Friday, 31 January 2025

End: Friday, 11 April 2025

Two Monday, 28 April - Friday, 27 June 2025

Three Monday, 14 July - Friday, 19 September 2025

Four Monday, 6 October - Friday, 12 December 2025

STATIONERY

All stationery requirements will be provided free of charge by the school in 2025.



BUSES

Bus transport is available for students.

For full details of bus routes and conditions please contact Go Bus, phone: 06 867 5290.



SCHOOL UNIFORM



The aim of the uniform is a neat, well-groomed appearance which fosters pride in the school and in the student. The uniform regulations must be adhered to with the correct school uniform being worn at all times.

FORMAL/DAILY UNIFORM

Students **must** wear this to school **daily**.

Polo/Blouse

Plain white collared polo/blouse with sleeve above elbow.

Shorts

Regulation GisInt navy shorts, above the knee.

Track Pants

Regulation GisInt plain navy (without stripes/bands).

Shoes

- All covered shoes worn to school must be completely black (below the ankle - no high tops); or
- Plain black sandals, worn correctly with backstrap and no straps above ankle. No socks with sandals.
- **Jandals, slides or Crocs are NOT permitted.**

Socks

GisInt regulation socks or short navy blue socks.

Sweatshirt

Regulation navy sweatshirt (optional).

Jacket

Regulation GisInt jacket (optional).



PE UNIFORM

Students must **bring** this to school **daily**.

PE Shirt

Regulation GisInt shirt.



PE Shorts

Plain black sports shorts just above the knee (no stripes or non-school logos).

Swimwear

- Swimming shorts (not below the knee) only are to be worn in the pool.
- Boys – no boxer shorts/underwear in the pool.
- Girls - full togs, no bikinis. Rash-vest and swimming shorts permitted as over-garments.

OTHER ASPECTS OF UNIFORM

Jewellery

Small plain studs or sleepers are optional for ears only. A taonga may be worn inside the shirt. No other jewellery permitted.

Hair

Hair must be kept tidy at all times. Hair bands and hair ties must be plain black, white or navy.

Hats & Sunglasses



- Students are strongly encouraged to wear a sun hat and sunglasses when outside. Plain navy/dark blue or black hats only.
- Plain navy/dark blue or black beanies are permitted in Terms 2 and 3.
- Hats to be worn the correct way around and both hats and beanies removed when indoors.

Make-up

NO make-up (including tinted lip balms) or coloured nail polish permitted.

Thermals/Long Sleeves

If you are wearing these items, they must be under your regulation school uniform and not visible.

GISINT UNIFORMS ARE ONLY AVAILABLE ONLINE FROM ARGYLE SCHOOLWEAR

Website: www.argyleonline.co.nz

Phone: 0800 110 059

Email: aohelp@argyleonline.co.nz





GISINT!

156 Roebuck Rd, Gisborne
☎ 06 867 2246
✉ admin@gisint.school.nz
f @GisborneIntermediate

For additional information and extra copies of the prospectus visit:
www.gisint.school.nz

